

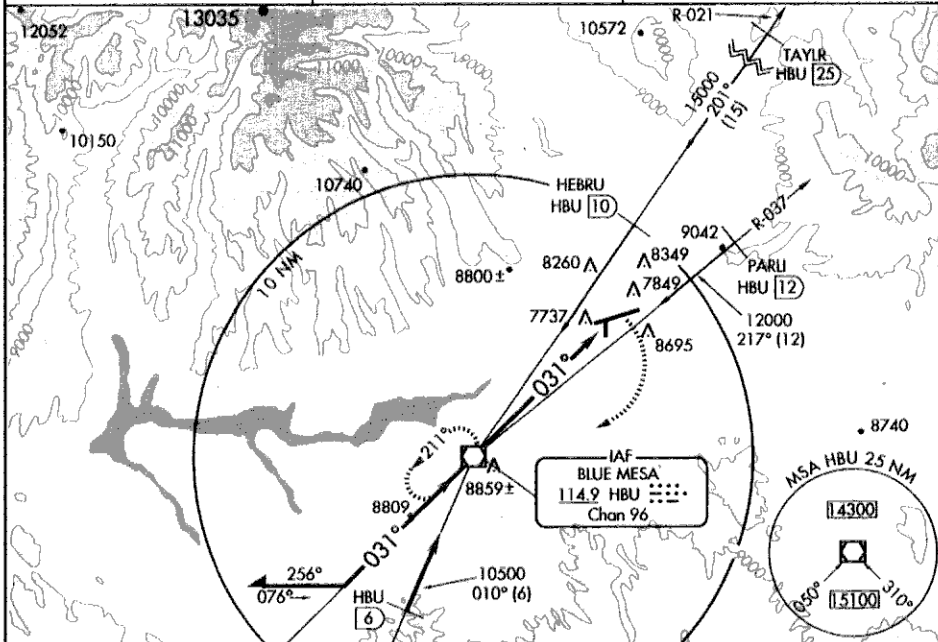
VOR/DME HBU <b>114.9</b> Chan <b>96</b>	APP CRS <b>031°</b>	Rwy ldg TDZE Apt Elev <b>7673</b>	N/A N/A
---	------------------------	--	------------

**VOR or GPS-A**  
GUNNISON COUNTY (GUC)

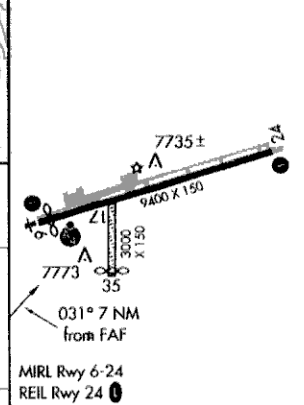
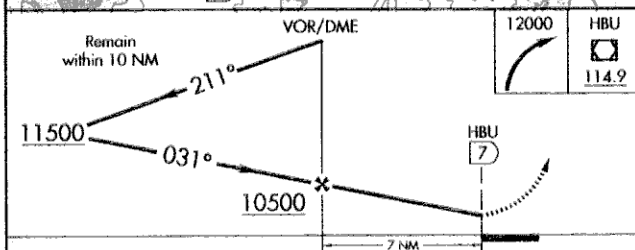
▼ Procedure not authorized when airport closed except by prior arrangement.  
 ▲ Obtain local altimeter setting on CTAF; when not received, procedure not authorized.  
 Circling not authorized to Rwy 24 for Cat. D aircraft.

MISSED APPROACH: Climbing right turn to 12000 direct HBU VOR/DME and hold.

AWOS-3 <b>135.075</b>	DENVER CENTER <b>125.35 354.05</b>	UNICOM <b>122.7 (CTAF)</b>
--------------------------	---------------------------------------	-------------------------------



ELEV <b>7673</b>	Rwy 6 ldg 9000'
	Rwy 35 ldg 2800'



CATEGORY	A				B				C				D				FAF to MAP 7 NM				
	9260-2 1587 (1600-2)		9340-2 1667 (1700-2)		9340-3 1667 (1700-3)		9900-3 2227 (2300-3)		Knots 60 90 120 150 180		Min:Sec 7:00 4:40 3:30 2:48 2:20										

SW-1, 03 OCT 2002

SW-1, 03 OCT 2002