


**ILS RWY 6**

GUNNISON COUNTY (GUC)

LOC I-GUC <b>110.5</b> Chan 42	APP CRS <b>062°</b>	Rwy Idg TDZE Apt Elev <b>9000</b> <b>7660</b> <b>7673</b>
--------------------------------------	------------------------	--

Procedure not authorized when airport closed except by prior arrangement.  
 If local altimeter setting not received, procedure not authorized.  
 Inoperative table does not apply.

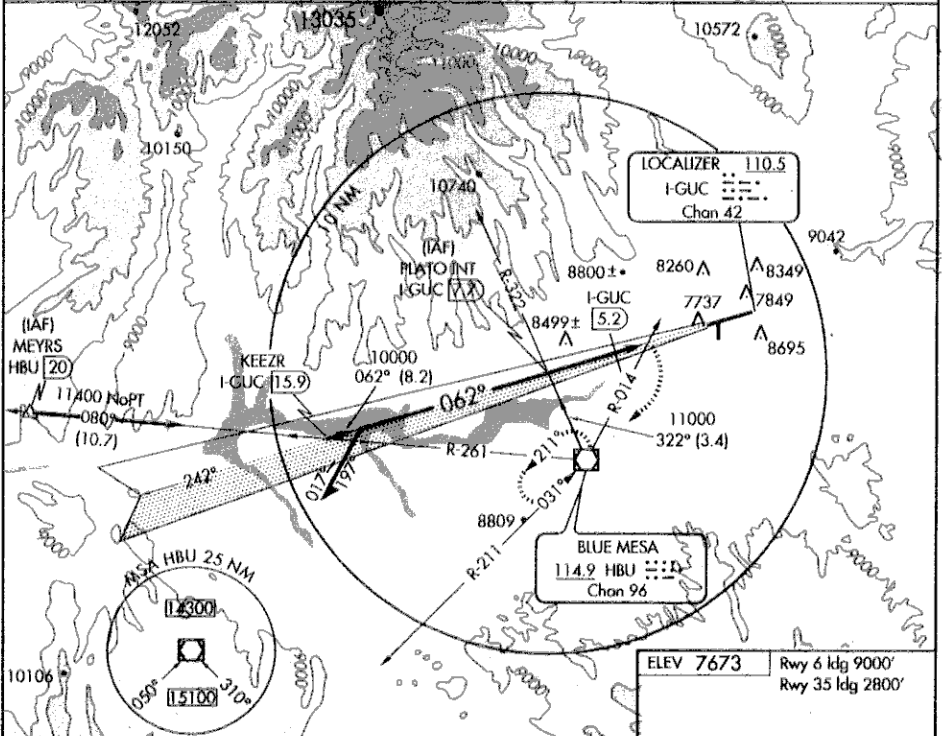
MALSF 

MISSED APPROACH: Climbing right turn to 12000 direct HBU VOR/DME and hold.

AWOS-3  
**135.075**

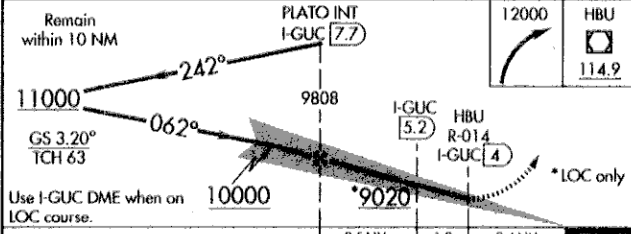
DENVER CENTER  
**125.35 354.05**

UNICOM  
**122.7 (CTAF)**

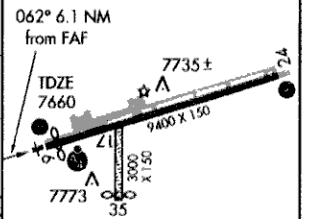


SW-1, 03 OCT 2002

SW-1, 03 OCT 2002



ELEV 7673	Rwy Idg 9000'
	Rwy 35 Idg 2800'



CATEGORY	A	B	C	D
S-ILS 6	8500-2¾ 840 (900-2¾)		NA	
S-LOC 6	9020-2¾ 1360 (1400-2¾)		9020-3 1360 (1400-3)	
CIRCLING	9180-2¾ 1507 (1600-2¾)		9180-3 1507 (1600-3)	
DME MINIMUMS				
S-LOC 6	8520-2¾ 860 (900-2¾)		8520-3 860 (900-3)	

MIRL Rwy 6-24 REIL Rwy 24					
FAF to MAP 3.7 NM					
Knots	60	90	120	150	180
Min:Sec	3:42	2:28	1:51	1:29	1:14